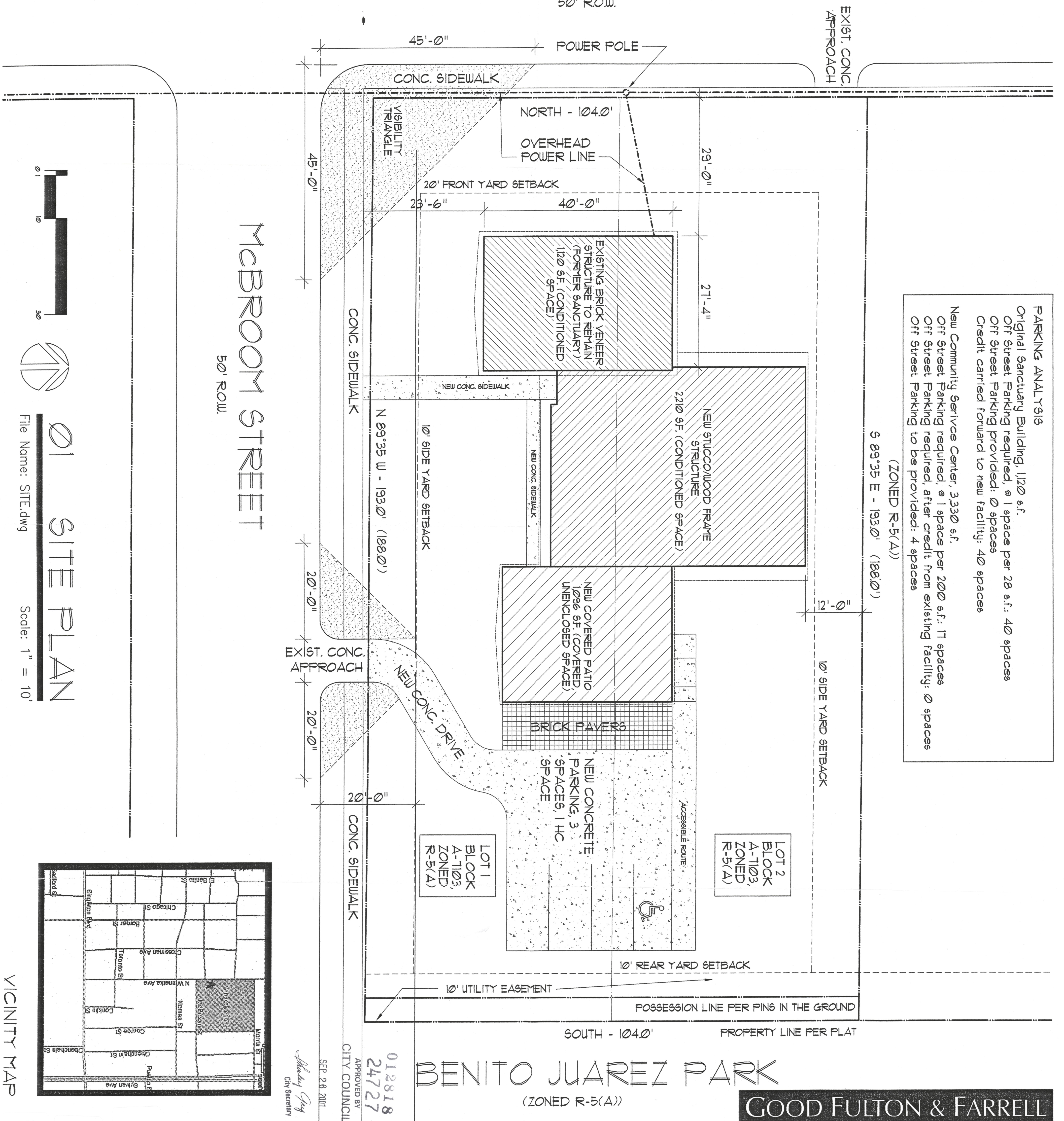


NORTH WINNETKA

50' ROW.



PARKING ANALYSIS
 Original Sanctuary Building, 1120 s.f.
 Off Street Parking required, @ 1 space per 28 s.f.: 40 spaces
 Off Street Parking provided: 0 spaces
 Credit carried forward to new facility: 40 spaces
 New Community Service Center, 3330 s.f.
 Off Street Parking required, @ 1 space per 20 s.f.: 17 spaces
 Off Street Parking required, after credit from existing facility: 0 spaces
 Off Street Parking to be provided: 4 spaces
 (ZONED R-5(A))
 5 89'35" E - 193'0" (188'0")

McBROOK STREET
 50' ROW.

BENITO JUAREZ PARK

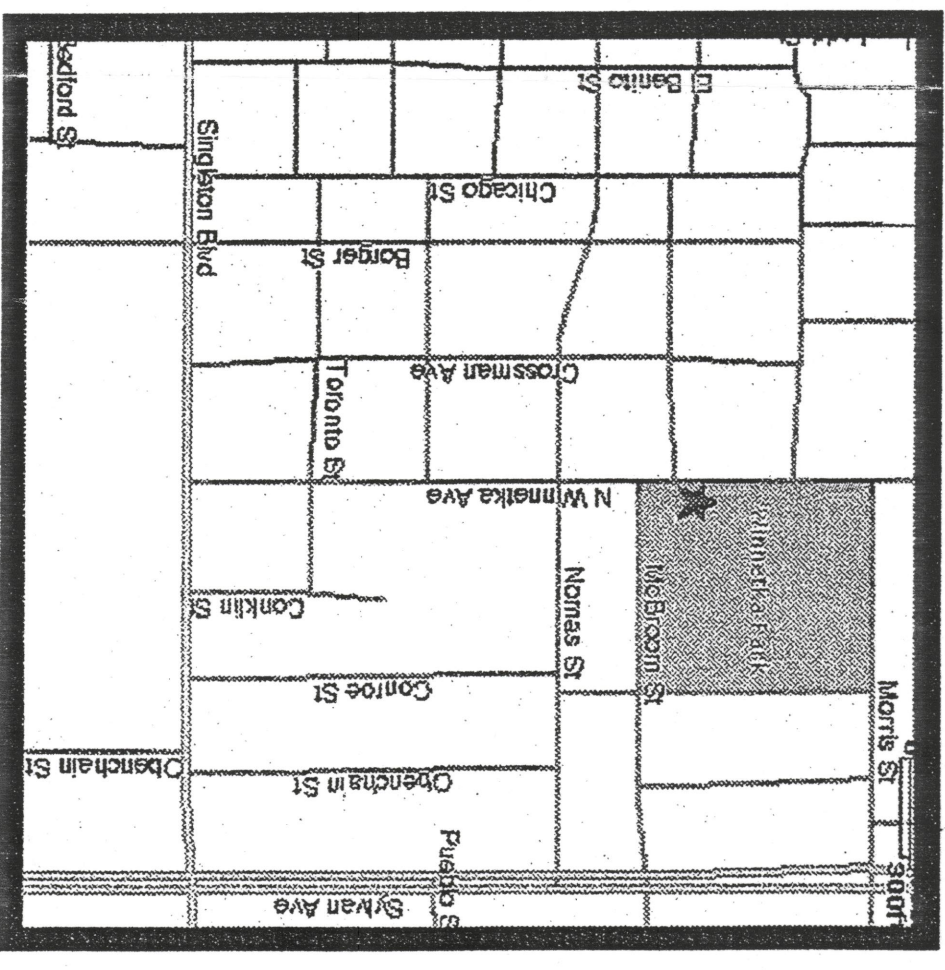
(ZONED R-5(A))

GOOD FULTON & FARRELL ARCHITECTS

2808 Fairmount Suite 300 Dallas, Texas 75201 214.303.1500 F 214.303.1512

The SARAH WILKE
 YOUTH CENTER
 3326 NORTH WINNETKA
 DALLAS, TEXAS

SEP 28 2001
 APPROVED BY
 CITY COUNCIL
 012818
 24727
 Chris Andersen
 City Secretary



01 SITE PLAN

File Name: SITE.dwg

Scale: 1" = 10'

VICINITY MAP

1 OF 2

Zoning File No.
 0001-159/11374-NW(FD)
 Approved by City Plan Commission
 August 16, 2001
 Specific Use Permit No.
 1456
 Site Plan